



INDUSTRIAL SHELVING



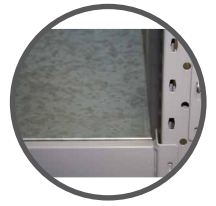
LONGSPAN SHELVING

Our efficient super strong range shelving solution is ideal for squeeze spots, holding boxes, parts, and anything up to an impressive 815kg per shelf!





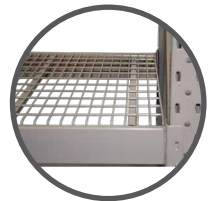
OTHER SHELF OPTIONS



Galvanised Shelf



Metal Shelf



Wire Shelf

STANDARD FINISHES

- Powder-coated Grey
- Powder-coated White
- Powder-coated Black

MOBILE OPTIONS



Wheels with Brake
Wheels without Brake

PRODUCT OVERVIEW

Longspan shelves are our mid-range storage solution. Designed for fitting into squeeze spots and for holding boxes, parts or anything that is reasonably heavy. It holds impressive weights of up to 815 kg per shelf (and 4000 kg per bay). And we hold so many sizes that we challenge you to find a space we can't fit out to within 20 cm.

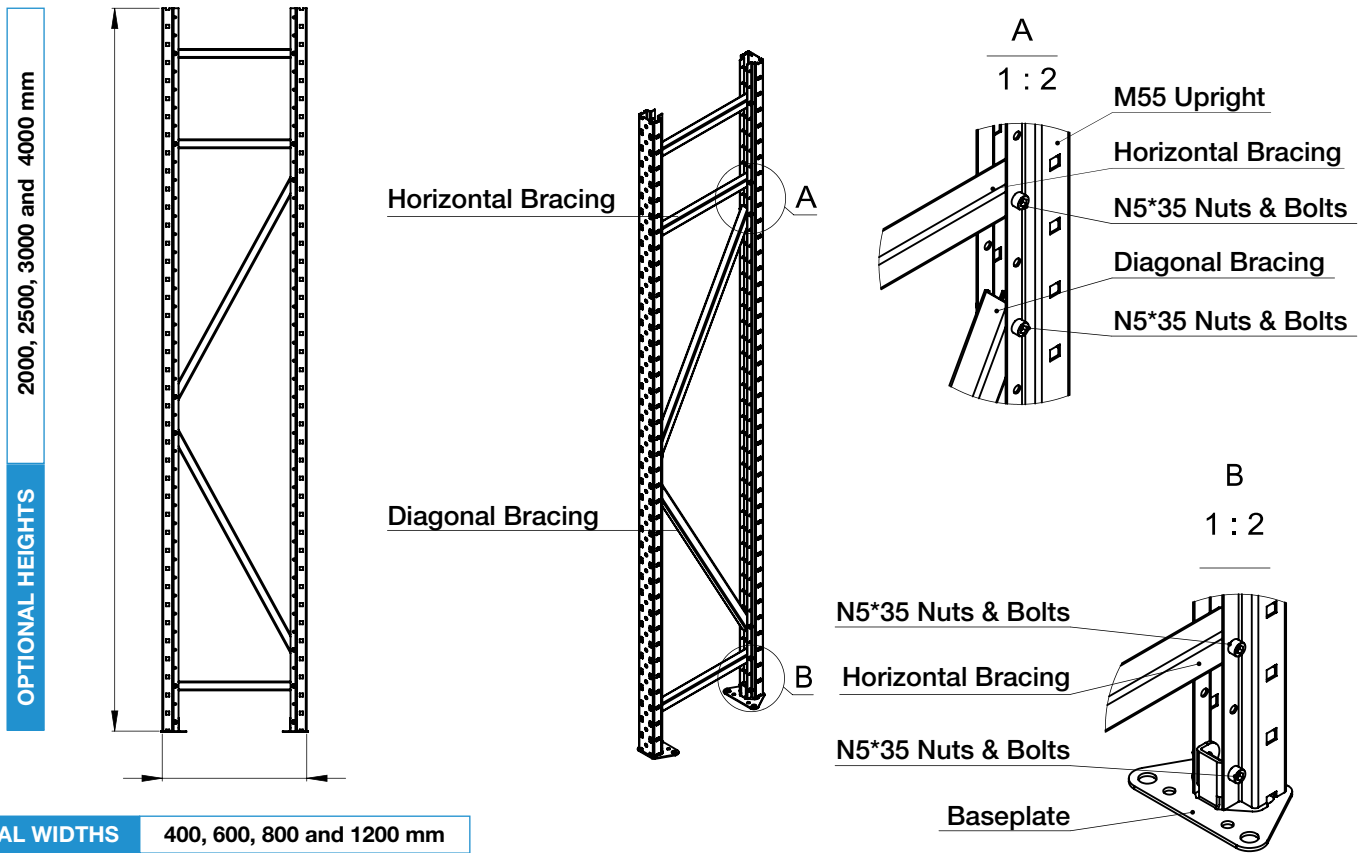
It is really strong, the steel is top quality, the powder coating is superior to competing systems, the base plates are thick.

KEY FEATURES

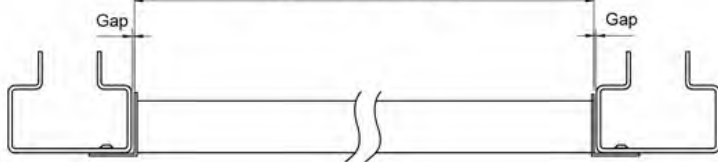
- ✓ Safety Locking System
- ✓ Easy to Assemble Bolt Together System
- ✓ Available in White, Grey and Black
- ✓ Superior Thick Particle Board
- ✓ Top Quality Powdercoated Steel
- ✓ Various Lengths, Widths, Heights Available
- ✓ Heavy Duty Base Plate

Why Unirack Longspan is the best on the market?

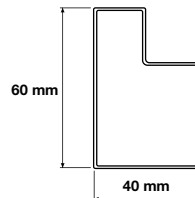
Unirack Longspan shelving uses a design taken from Pallet Racking, meaning all the uprights are bolted together rather than welded. This ensures greater structural flexibility and strength over a longer period of time and prolonged use. We used experienced structural engineers when pairing the heavy duty beams and uprights to ensure the maximum safe load capacity. This is why the Unirack design is one of the most tried and tested on the market, having been used for over 20 years.



BEAM LENGTH 900, 1200, 1500, 1800, 2000, 2400, 2700 and 3000 mm



Top View



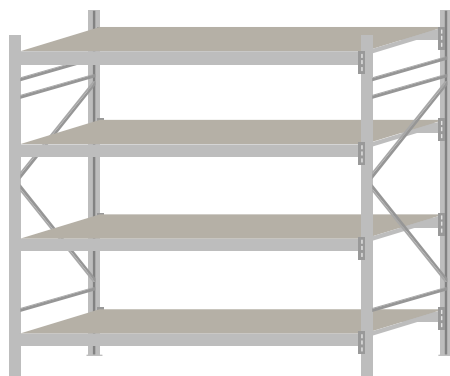
Step Beam Cross Section



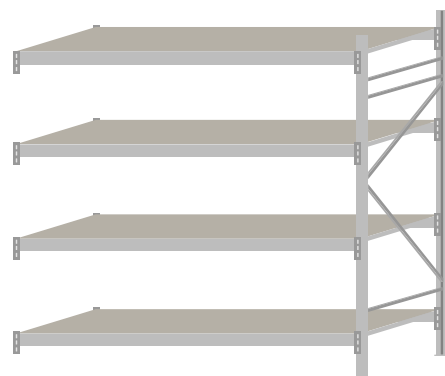
Step Beam Side View



Safety Pin Included



COMPLETE BAY



ADD-ON BAY

UPRIGHTS

Code	Assembled Dimension (Height x Depth)	RRP inc GST
LSU20040	2000 x 400 mm	\$56.00
LSU20060	2000 x 600 mm	\$56.00
LSU20080	2000 x 800 mm	\$61.00
LSU20012	2000 x 1200 mm	\$71.00
LSU25040	2500 x 400 mm	\$65.00
LSU25060	2500 x 600 mm	\$65.00
LSU25080	2500 x 800 mm	\$70.00
LSU25012	2500 x 1200 mm	\$80.00
LSU30040	3000 x 400 mm	\$84.00
LSU30060	3000 x 600 mm	\$84.00
LSU30080	3000 x 800 mm	\$90.00
LSU30012	3000 x 1200 mm	\$102.00
LSU40040	4000 x 400 mm	\$105.00
LSU40060	4000 x 600 mm	\$105.00
LSU40080	4000 x 800 mm	\$112.00
LSU40012	4000 x 1200 mm	\$126.00

BEAMS

Code	Length	Max Load Capacity (UDL)	RRP inc GST
LSB600	600 mm	1000 kg	\$12.00
LSB900	900 mm	815 kg	\$15.00
LSB1200	1200 mm	793 kg	\$16.00
LSB1500	1500 mm	635 kg	\$19.00
LSB1800	1800 mm	529 kg	\$22.00
LSB2000	2000 mm	471 kg	\$24.00
LSB2400	2400 mm	327 kg	\$29.00
LSB2700	2700 mm	258 kg	\$34.00
LSB3000	3000 mm	209 kg	\$38.00

GALVANISED SHELVES

Code	Description	RRP inc GST
LSGS5060	500 x 600 mm	\$14.00
LSGS6060	600 x 600 mm	\$16.00

WIRE SHELVES

Code	Description	RRP inc GST
LSWS5040	500 x 400 mm	\$19.00
LSWS5060	500 x 600 mm	\$23.00
LSWS5080	500 x 800 mm	\$27.00
LSWS6040	600 x 400 mm	\$21.00
LSWS6060	600 x 600 mm	\$25.00
LSWS6080	600 x 800 mm	\$30.00

ACCESSORIES

Code	Product Name	Description	RRP inc GST
LP-LS600	Louved Panel	Louved Panel Grey, 600mm(W) x 450mm(H)	\$49.00
LS-WHEEL-B	Wheel with Brake	Lockable wheel to suit Longspan Workbench	\$19.00
LS-WHEELNB	Wheel without Brake	Nylon wheel to suit all Longspan Workbench	\$18.00

TIMBER SHELVES

Code	Description	RRP inc GST
LSTS6040	600 x 400 x 18mm	\$10.00
LSTS9040	900 x 400 x 18mm	\$10.00
LSTS12040	1200 x 400 x 18mm	\$12.00
LSTS15040	1500 x 400 x 18mm	\$15.00
LSTS18040	1800 x 400 x 18mm	\$18.00
LSTS20040	2000 x 400 x 18mm	\$23.00
LSTS24040	2400 x 400 x 18mm	\$24.00
LSTS27040	2700 x 400 x 18mm	\$26.00
LSTS30040	3000 x 400 x 18mm	\$41.00
LSTS6060	600 x 600 x 18mm	\$15.00
LSTS9060	900 x 600 x 18mm	\$15.00
LSTS12060	1200 x 600 x 18mm	\$17.00
LSTS15060	1500 x 600 x 18mm	\$26.00
LSTS18060	1800 x 600 x 18mm	\$27.00
LSTS20060	2000 x 600 x 18mm	\$34.00
LSTS24060	2400 x 600 x 18mm	\$35.00
LSTS27060	2700 x 600 x 18mm	\$37.00
LSTS30060	3000 x 600 x 18mm	\$59.00
LSTS6080	600 x 800 x 18mm	\$15.00
LSTS9080	900 x 800 x 18mm	\$20.00
LSTS12080	1200 x 800 x 18mm	\$27.00
LSTS15080	1500 x 800 x 18mm	\$40.00
LSTS18080	1800 x 800 x 18mm	\$41.00
LSTS20080	2000 x 800 x 18mm	\$51.00
LSTS24080	2400 x 800 x 18mm	\$52.00
LSTS27080	2700 x 800 x 18mm	\$59.00
LSTS30080	3000 x 800 x 18mm	\$87.00
LSTS6012	600 x 1200 x 18mm	\$18.00
LSTS9012	900 x 1200 x 18mm	\$28.00
LSTS12012	1200 x 1200 x 18mm	\$35.00
LSTS15012	1500 x 1200 x 18mm	\$54.00
LSTS18012	11200 x 1200 x 18mm	\$55.00
LSTS20012	2000 x 1200 x 18mm	\$69.00
LSTS24012	2400 x 1200 x 18mm	\$70.00
LSTS27012	2700 x 1200 x 18mm	\$77.00
LSTS30012	3000 x 1200 x 18mm	\$124.00

METAL SHELVES

Code	Description	RRP inc GST
LSMS6040	600 x 400 mm	\$11.00
LSMS9040	900 x 400 mm	\$16.00
LSMS10040	1000 x 400 mm	\$18.00
LSMS12040	1200 x 400 mm	\$21.00
LSMS6060	600 x 600 mm	\$15.00
LSMS9060	900 x 600 mm	\$23.00
LSMS10060	1000 x 600 mm	\$26.00
LSMS12060	1200 x 600 mm	\$30.00
LSMS6080	600 x 800 mm	\$22.00
LSMS9080	900 x 800 mm	\$28.00
LSMS10080	1000 x 800 mm	\$34.00
LSMS12080	1200 x 800 mm	\$40.00

AVAILABLE COLOUR



Code	Description (W x D)	Complete Bay	Add-on Bay	Extra Shelf	Load Capacity
2006-4-TS	600 x 400 mm	\$248.00	\$192.00	\$34.00	1000kg
2009-4-TS	900 x 400 mm	\$272.00	\$216.00	\$40.00	815 kg
2012-4-TS	1200 x 400 mm	\$288.00	\$232.00	\$44.00	793 kg
2015-4-TS	1500 x 400 mm	\$324.00	\$268.00	\$53.00	635 kg
2018-4-TS	1800 x 400 mm	\$360.00	\$304.00	\$62.00	529 kg
2020-4-TS	2000 x 400 mm	\$396.00	\$340.00	\$71.00	471 kg
2024-4-TS	2400 x 400 mm	\$440.00	\$384.00	\$82.00	327 kg
2027-4-TS	2700 x 400 mm	\$488.00	\$432.00	\$94.00	258 kg
2030-4-TS	3000 x 400 mm	\$580.00	\$524.00	\$117.00	209 kg
2006-6-TS	600 x 600 mm	\$268.00	\$212.00	\$39.00	1000kg
2009-6-TS	900 x 600 mm	\$292.00	\$236.00	\$45.00	815 kg
2012-6-TS	1200 x 600 mm	\$308.00	\$252.00	\$49.00	793 kg
2015-6-TS	1500 x 600 mm	\$368.00	\$312.00	\$64.00	635 kg
2018-6-TS	1800 x 600 mm	\$396.00	\$340.00	\$71.00	529 kg
2020-6-TS	2000 x 600 mm	\$440.00	\$384.00	\$82.00	471 kg
2024-6-TS	2400 x 600 mm	\$484.00	\$428.00	\$93.00	327 kg
2027-6-TS	2700 x 600 mm	\$532.00	\$476.00	\$105.00	258 kg
2030-6-TS	3000 x 600 mm	\$652.00	\$596.00	\$135.00	209 kg
2006-8-TS	600 x 800 mm	\$278.00	\$217.00	\$39.00	1000kg
2009-8-TS	900 x 800 mm	\$322.00	\$261.00	\$50.00	815 kg
2012-8-TS	1200 x 800 mm	\$358.00	\$297.00	\$59.00	793 kg
2015-8-TS	1500 x 800 mm	\$434.00	\$373.00	\$78.00	635 kg
2018-8-TS	1800 x 800 mm	\$462.00	\$401.00	\$85.00	529 kg
2020-8-TS	2000 x 800 mm	\$518.00	\$457.00	\$99.00	471 kg
2024-8-TS	2400 x 800 mm	\$562.00	\$501.00	\$110.00	327 kg
2027-8-TS	2700 x 800 mm	\$630.00	\$569.00	\$127.00	258 kg
2030-8-TS	3000 x 800 mm	\$774.00	\$713.00	\$163.00	209 kg
* 2006-12-TS	600 x 1200 mm	\$382.00	\$311.00	\$60.00	1000kg
* 2009-12-TS	900 x 1200 mm	\$446.00	\$375.00	\$76.00	815 kg
* 2012-12-TS	1200 x 1200 mm	\$482.00	\$411.00	\$85.00	793 kg
** 2015-12-TS	1500 x 1200 mm	\$618.00	\$547.00	\$119.00	635 kg
** 2018-12-TS	1800 x 1200 mm	\$646.00	\$575.00	\$126.00	529 kg
*** 2020-12-TS	2000 x 1200 mm	\$754.00	\$683.00	\$153.00	471 kg
*** 2024-12-TS	2400 x 1200 mm	\$798.00	\$727.00	\$164.00	327 kg
*** 2027-12-TS	2700 x 1200 mm	\$866.00	\$795.00	\$181.00	258 kg
**** 2030-12-TS	3000 x 1200 mm	\$1122.00	\$1051.00	\$245.00	209 kg

* 2 support bar included per shelf ** 3 support bar included per shelf *** 4 support bar included per shelf **** 5 support bar included per shelf

All bays are supplied with 4 shelves and 18 mm particle board

NOTE: All prices are subject to change without prior notice

AVAILABLE COLOUR



Code	Description (W x D)	Complete Bay	Add-on Bay	Extra Shelf	Load Capacity
2506-4-TS	600 x 400 mm	\$266.00	\$201.00	\$34.00	1000kg
2509-4-TS	900 x 400 mm	\$290.00	\$225.00	\$40.00	815 kg
2512-4-TS	1200 x 400 mm	\$306.00	\$241.00	\$44.00	793 kg
2515-4-TS	1500 x 400 mm	\$342.00	\$277.00	\$53.00	635 kg
2518-4-TS	1800 x 400 mm	\$378.00	\$313.00	\$62.00	529 kg
2520-4-TS	2000 x 400 mm	\$414.00	\$349.00	\$71.00	471 kg
2524-4-TS	2400 x 400 mm	\$458.00	\$393.00	\$82.00	327 kg
2527-4-TS	2700 x 400 mm	\$506.00	\$441.00	\$94.00	258 kg
2530-4-TS	3000 x 400 mm	\$598.00	\$533.00	\$117.00	209 kg
2506-6-TS	600 x 600 mm	\$286.00	\$221.00	\$39.00	1000kg
2509-6-TS	900 x 600 mm	\$310.00	\$245.00	\$45.00	815 kg
2512-6-TS	1200 x 600 mm	\$326.00	\$261.00	\$49.00	793 kg
2515-6-TS	1500 x 600 mm	\$386.00	\$321.00	\$64.00	635 kg
2518-6-TS	1800 x 600 mm	\$414.00	\$349.00	\$71.00	529 kg
2520-6-TS	2000 x 600 mm	\$458.00	\$393.00	\$82.00	471 kg
2524-6-TS	2400 x 600 mm	\$502.00	\$437.00	\$93.00	327 kg
2527-6-TS	2700 x 600 mm	\$550.00	\$485.00	\$105.00	258 kg
2530-6-TS	3000 x 600 mm	\$670.00	\$605.00	\$135.00	209 kg
2506-8-TS	600 x 800 mm	\$296.00	\$226.00	\$39.00	1000kg
2509-8-TS	900 x 800 mm	\$340.00	\$270.00	\$50.00	815 kg
2512-8-TS	1200 x 800 mm	\$376.00	\$306.00	\$59.00	793 kg
2515-8-TS	1500 x 800 mm	\$452.00	\$382.00	\$78.00	635 kg
2518-8-TS	1800 x 800 mm	\$480.00	\$410.00	\$85.00	529 kg
2520-8-TS	2000 x 800 mm	\$536.00	\$466.00	\$99.00	471 kg
2524-8-TS	2400 x 800 mm	\$580.00	\$510.00	\$110.00	327 kg
2527-8-TS	2700 x 800 mm	\$648.00	\$578.00	\$127.00	258 kg
2530-8-TS	3000 x 800 mm	\$792.00	\$722.00	\$163.00	209 kg
* 2506-12-TS	600 x 1200 mm	\$400.00	\$320.00	\$60.00	1000kg
* 2509-12-TS	900 x 1200 mm	\$464.00	\$384.00	\$76.00	815 kg
* 2512-12-TS	1200 x 1200 mm	\$500.00	\$420.00	\$85.00	793 kg
** 2515-12-TS	1500 x 1200 mm	\$636.00	\$556.00	\$119.00	635 kg
** 2518-12-TS	1800 x 1200 mm	\$664.00	\$584.00	\$126.00	529 kg
*** 2520-12-TS	2000 x 1200 mm	\$772.00	\$692.00	\$153.00	471 kg
*** 2524-12-TS	2400 x 1200 mm	\$816.00	\$736.00	\$164.00	327 kg
*** 2527-12-TS	2700 x 1200 mm	\$884.00	\$804.00	\$181.00	258 kg
**** 2530-12-TS	3000 x 1200 mm	\$1140.00	\$1060.00	\$245.00	209 kg

* 2 support bar included per shelf ** 3 support bar included per shelf *** 4 support bar included per shelf **** 5 support bar included per shelf

All bays are supplied with 4 shelves and 18 mm particle board

NOTE: All prices are subject to change without prior notice

AVAILABLE COLOUR



Code	Description (W x D)	Complete Bay	Add-on Bay	Extra Shelf	Load Capacity
3006-4-TS	600 x 400 mm	\$304.00	\$220.00	\$34.00	1000kg
3009-4-TS	900 x 400 mm	\$328.00	\$244.00	\$40.00	815 kg
3012-4-TS	1200 x 400 mm	\$344.00	\$260.00	\$44.00	793 kg
3015-4-TS	1500 x 400 mm	\$380.00	\$296.00	\$53.00	635 kg
3018-4-TS	1800 x 400 mm	\$416.00	\$332.00	\$62.00	529 kg
3020-4-TS	2000 x 400 mm	\$452.00	\$368.00	\$71.00	471 kg
3024-4-TS	2400 x 400 mm	\$496.00	\$412.00	\$82.00	327 kg
3027-4-TS	2700 x 400 mm	\$544.00	\$460.00	\$94.00	258 kg
3030-4-TS	3000 x 400 mm	\$636.00	\$552.00	\$117.00	209 kg
3006-6-TS	600 x 600 mm	\$324.00	\$240.00	\$39.00	1000kg
3009-6-TS	900 x 600 mm	\$348.00	\$264.00	\$45.00	815 kg
3012-6-TS	1200 x 600 mm	\$364.00	\$280.00	\$49.00	793 kg
3015-6-TS	1500 x 600 mm	\$424.00	\$340.00	\$64.00	635 kg
3018-6-TS	1800 x 600 mm	\$452.00	\$368.00	\$71.00	529 kg
3020-6-TS	2000 x 600 mm	\$496.00	\$412.00	\$82.00	471 kg
3024-6-TS	2400 x 600 mm	\$540.00	\$456.00	\$93.00	327 kg
3027-6-TS	2700 x 600 mm	\$588.00	\$504.00	\$105.00	258 kg
3030-6-TS	3000 x 600 mm	\$708.00	\$624.00	\$135.00	209 kg
3006-8-TS	600 x 800 mm	\$336.00	\$246.00	\$39.00	1000kg
3009-8-TS	900 x 800 mm	\$380.00	\$290.00	\$50.00	815 kg
3012-8-TS	1200 x 800 mm	\$416.00	\$326.00	\$59.00	793 kg
3015-8-TS	1500 x 800 mm	\$492.00	\$402.00	\$78.00	635 kg
3018-8-TS	1800 x 800 mm	\$520.00	\$430.00	\$85.00	529 kg
3020-8-TS	2000 x 800 mm	\$576.00	\$486.00	\$99.00	471 kg
3024-8-TS	2400 x 800 mm	\$620.00	\$530.00	\$110.00	327 kg
3027-8-TS	2700 x 800 mm	\$688.00	\$598.00	\$127.00	258 kg
3030-8-TS	3000 x 800 mm	\$832.00	\$742.00	\$163.00	209 kg
* 3006-12-TS	600 x 1200 mm	\$444.00	\$342.00	\$60.00	1000kg
* 3009-12-TS	900 x 1200 mm	\$508.00	\$406.00	\$76.00	815 kg
* 3012-12-TS	1200 x 1200 mm	\$544.00	\$442.00	\$85.00	793 kg
** 3015-12-TS	1500 x 1200 mm	\$680.00	\$578.00	\$119.00	635 kg
** 3018-12-TS	1800 x 1200 mm	\$708.00	\$606.00	\$126.00	529 kg
*** 3020-12-TS	2000 x 1200 mm	\$816.00	\$714.00	\$153.00	471 kg
*** 3024-12-TS	2400 x 1200 mm	\$860.00	\$758.00	\$164.00	327 kg
*** 3027-12-TS	2700 x 1200 mm	\$928.00	\$826.00	\$181.00	258 kg
**** 3030-12-TS	3000 x 1200 mm	\$1184.00	\$1082.00	\$245.00	209 kg

* 2 support bar included per shelf ** 3 support bar included per shelf *** 4 support bar included per shelf **** 5 support bar included per shelf

All bays are supplied with 4 shelves and 18 mm particle board

NOTE: All prices are subject to change without prior notice

AVAILABLE COLOUR



Code	Description (W x D)	Complete Bay	Add-on Bay	Extra Shelf	Load Capacity
4006-4-TS	600 x 400 mm	\$346.00	\$241.00	\$34.00	1000kg
4009-4-TS	900 x 400 mm	\$370.00	\$265.00	\$40.00	815 kg
4012-4-TS	1200 x 400 mm	\$386.00	\$281.00	\$44.00	793 kg
4015-4-TS	1500 x 400 mm	\$422.00	\$317.00	\$53.00	635 kg
4018-4-TS	1800 x 400 mm	\$458.00	\$353.00	\$62.00	529 kg
4020-4-TS	2000 x 400 mm	\$494.00	\$389.00	\$71.00	471 kg
4024-4-TS	2400 x 400 mm	\$538.00	\$433.00	\$82.00	327 kg
4027-4-TS	2700 x 400 mm	\$586.00	\$481.00	\$94.00	258 kg
4030-4-TS	3000 x 400 mm	\$678.00	\$573.00	\$117.00	209 kg
4006-6-TS	600 x 600 mm	\$366.00	\$261.00	\$39.00	1000kg
4009-6-TS	900 x 600 mm	\$390.00	\$285.00	\$45.00	815 kg
4012-6-TS	1200 x 600 mm	\$406.00	\$301.00	\$49.00	793 kg
4015-6-TS	1500 x 600 mm	\$466.00	\$361.00	\$64.00	635 kg
4018-6-TS	1800 x 600 mm	\$494.00	\$389.00	\$71.00	529 kg
4020-6-TS	2000 x 600 mm	\$538.00	\$433.00	\$82.00	471 kg
4024-6-TS	2400 x 600 mm	\$582.00	\$477.00	\$93.00	327 kg
4027-6-TS	2700 x 600 mm	\$630.00	\$525.00	\$105.00	258 kg
4030-6-TS	3000 x 600 mm	\$750.00	\$645.00	\$135.00	209 kg
4006-8-TS	600 x 800 mm	\$380.00	\$268.00	\$39.00	1000kg
4009-8-TS	900 x 800 mm	\$424.00	\$312.00	\$50.00	815 kg
4012-8-TS	1200 x 800 mm	\$460.00	\$348.00	\$59.00	793 kg
4015-8-TS	1500 x 800 mm	\$536.00	\$424.00	\$78.00	635 kg
4018-8-TS	1800 x 800 mm	\$564.00	\$452.00	\$85.00	529 kg
4020-8-TS	2000 x 800 mm	\$620.00	\$508.00	\$99.00	471 kg
4024-8-TS	2400 x 800 mm	\$664.00	\$552.00	\$110.00	327 kg
4027-8-TS	2700 x 800 mm	\$732.00	\$620.00	\$127.00	258 kg
4030-8-TS	3000 x 800 mm	\$876.00	\$764.00	\$163.00	209 kg
* 4006-12-TS	600 x 1200 mm	\$492.00	\$366.00	\$60.00	1000kg
* 4009-12-TS	900 x 1200 mm	\$556.00	\$430.00	\$76.00	815 kg
* 4012-12-TS	1200 x 1200 mm	\$592.00	\$466.00	\$85.00	793 kg
** 4015-12-TS	1500 x 1200 mm	\$728.00	\$602.00	\$119.00	635 kg
** 4018-12-TS	1800 x 1200 mm	\$756.00	\$630.00	\$126.00	529 kg
*** 4020-12-TS	2000 x 1200 mm	\$864.00	\$738.00	\$153.00	471 kg
*** 4024-12-TS	2400 x 1200 mm	\$908.00	\$782.00	\$164.00	327 kg
*** 4027-12-TS	2700 x 1200 mm	\$976.00	\$850.00	\$181.00	258 kg
**** 4030-12-TS	3000 x 1200 mm	\$1232.00	\$1106.00	\$245.00	209 kg

* 2 support bar included per shelf ** 3 support bar included per shelf *** 4 support bar included per shelf **** 5 support bar included per shelf

All bays are supplied with 4 shelves and 18 mm particle board

NOTE: All prices are subject to change without prior notice

2000mm HIGH
LONGSPAN SHELVING - METAL SHELVES
AVAILABLE COLOUR


Code	Description (W x D)	Complete Bay	Add-on Bay	Extra Shelf	Load Capacity
2006-4-MS	600 x 400 mm	\$252.00	\$196.00	\$35.00	1000kg
2009-4-MS	900 x 400 mm	\$296.00	\$240.00	\$46.00	815 kg
2012-4-MS	1200 x 400 mm	\$324.00	\$268.00	\$53.00	793 kg
2015-4-MS	1500 x 400 mm	\$372.00	\$316.00	\$65.00	635 kg
2018-4-MS	1800 x 400 mm	\$416.00	\$360.00	\$76.00	529 kg
2020-4-MS	2000 x 400 mm	\$448.00	\$392.00	\$84.00	471 kg
2024-4-MS	2400 x 400 mm	\$512.00	\$456.00	\$100.00	327 kg
2027-4-MS	2700 x 400 mm	\$576.00	\$520.00	\$116.00	258 kg
2030-4-MS	3000 x 400 mm	\$632.00	\$576.00	\$130.00	209 kg
2006-6-MS	600 x 600 mm	\$268.00	\$212.00	\$39.00	1000kg
2009-6-MS	900 x 600 mm	\$324.00	\$268.00	\$53.00	815 kg
2012-6-MS	1200 x 600 mm	\$360.00	\$304.00	\$62.00	793 kg
2015-6-MS	1500 x 600 mm	\$416.00	\$360.00	\$76.00	635 kg
2018-6-MS	1800 x 600 mm	\$472.00	\$416.00	\$90.00	529 kg
2020-6-MS	2000 x 600 mm	\$512.00	\$456.00	\$100.00	471 kg
2024-6-MS	2400 x 600 mm	\$584.00	\$528.00	\$118.00	327 kg
2027-6-MS	2700 x 600 mm	\$660.00	\$604.00	\$137.00	258 kg
2030-6-MS	3000 x 600 mm	\$728.00	\$672.00	\$154.00	209 kg
2006-8-MS	600 x 800 mm	\$306.00	\$245.00	\$46.00	1000kg
2009-8-MS	900 x 800 mm	\$354.00	\$293.00	\$58.00	815 kg
2012-8-MS	1200 x 800 mm	\$410.00	\$349.00	\$72.00	793 kg
2015-8-MS	1500 x 800 mm	\$474.00	\$413.00	\$88.00	635 kg
2018-8-MS	1800 x 800 mm	\$522.00	\$461.00	\$100.00	529 kg
2020-8-MS	2000 x 800 mm	\$586.00	\$525.00	\$116.00	471 kg
2024-8-MS	2400 x 800 mm	\$674.00	\$613.00	\$138.00	327 kg
2027-8-MS	2700 x 800 mm	\$730.00	\$669.00	\$152.00	258 kg
2030-8-MS	3000 x 800 mm	\$834.00	\$773.00	\$178.00	209 kg

2500mm HIGH
LONGSPAN SHELVING - METAL SHELVES

Code	Description (W x D)	Complete Bay	Add-on Bay	Extra Shelf	Load Capacity
2506-4-MS	600 x 400 mm	\$270.00	\$205.00	\$35.00	1000kg
2509-4-MS	900 x 400 mm	\$314.00	\$249.00	\$46.00	815 kg
2512-4-MS	1200 x 400 mm	\$342.00	\$277.00	\$53.00	793 kg
2515-4-MS	1500 x 400 mm	\$390.00	\$325.00	\$65.00	635 kg
2518-4-MS	1800 x 400 mm	\$434.00	\$369.00	\$76.00	529 kg
2520-4-MS	2000 x 400 mm	\$466.00	\$401.00	\$84.00	471 kg
2524-4-MS	2400 x 400 mm	\$530.00	\$465.00	\$100.00	327 kg
2527-4-MS	2700 x 400 mm	\$594.00	\$529.00	\$116.00	258 kg
2530-4-MS	3000 x 400 mm	\$650.00	\$585.00	\$130.00	209 kg

NOTE: All prices are subject to change without prior notice

Code	Description (W x D)	Complete Bay	Add-on Bay	Extra Shelf	Load Capacity
2506-6-MS	600 x 600 mm	\$286.00	\$221.00	\$39.00	1000kg
2509-6-MS	900 x 600 mm	\$342.00	\$277.00	\$53.00	815 kg
2512-6-MS	1200 x 600 mm	\$378.00	\$313.00	\$62.00	793 kg
2515-6-MS	1500 x 600 mm	\$434.00	\$369.00	\$76.00	635 kg
2518-6-MS	1800 x 600 mm	\$490.00	\$425.00	\$90.00	529 kg
2520-6-MS	2000 x 600 mm	\$530.00	\$465.00	\$100.00	471 kg
2524-6-MS	2400 x 600 mm	\$602.00	\$537.00	\$118.00	327 kg
2527-6-MS	2700 x 600 mm	\$678.00	\$613.00	\$137.00	258 kg
2530-6-MS	3000 x 600 mm	\$746.00	\$681.00	\$154.00	209 kg
2506-8-MS	600 x 800 mm	\$324.00	\$254.00	\$46.00	1000kg
2509-8-MS	900 x 800 mm	\$372.00	\$302.00	\$58.00	815 kg
2512-8-MS	1200 x 800 mm	\$428.00	\$358.00	\$72.00	793 kg
2515-8-MS	1500 x 800 mm	\$492.00	\$422.00	\$88.00	635 kg
2518-8-MS	1800 x 800 mm	\$540.00	\$470.00	\$100.00	529 kg
2520-8-MS	2000 x 800 mm	\$604.00	\$534.00	\$116.00	471 kg
2524-8-MS	2400 x 800 mm	\$692.00	\$622.00	\$138.00	327 kg
2527-8-MS	2700 x 800 mm	\$748.00	\$678.00	\$152.00	258 kg
2530-8-MS	3000 x 800 mm	\$852.00	\$782.00	\$178.00	209 kg

3000mm HIGH

LONGSPAN SHELVING - METAL SHELVES

AVAILABLE COLOUR



Code	Description (W x D)	Complete Bay	Add-on Bay	Extra Shelf	Load Capacity
3006-4-MS	600 x 400 mm	\$308.00	\$224.00	\$35.00	1000kg
3009-4-MS	900 x 400 mm	\$352.00	\$268.00	\$46.00	815 kg
3012-4-MS	1200 x 400 mm	\$380.00	\$296.00	\$53.00	793 kg
3015-4-MS	1500 x 400 mm	\$428.00	\$344.00	\$65.00	635 kg
3018-4-MS	1800 x 400 mm	\$472.00	\$388.00	\$76.00	529 kg
3020-4-MS	2000 x 400 mm	\$504.00	\$420.00	\$84.00	471 kg
3024-4-MS	2400 x 400 mm	\$568.00	\$484.00	\$100.00	327 kg
3027-4-MS	2700 x 400 mm	\$632.00	\$548.00	\$116.00	258 kg
3030-4-MS	3000 x 400 mm	\$688.00	\$604.00	\$130.00	209 kg
3006-6-MS	600 x 600 mm	\$324.00	\$240.00	\$39.00	1000kg
3009-6-MS	900 x 600 mm	\$380.00	\$296.00	\$53.00	815 kg
3012-6-MS	1200 x 600 mm	\$416.00	\$332.00	\$62.00	793 kg
3015-6-MS	1500 x 600 mm	\$472.00	\$388.00	\$76.00	635 kg
3018-6-MS	1800 x 600 mm	\$528.00	\$444.00	\$90.00	529 kg
3020-6-MS	2000 x 600 mm	\$568.00	\$484.00	\$100.00	471 kg
3024-6-MS	2400 x 600 mm	\$640.00	\$556.00	\$118.00	327 kg
3027-6-MS	2700 x 600 mm	\$716.00	\$632.00	\$137.00	258 kg
3030-6-MS	3000 x 600 mm	\$784.00	\$700.00	\$154.00	209 kg

NOTE: All prices are subject to change without prior notice

Code	Description (W x D)	Complete Bay	Add-on Bay	Extra Shelf	Load Capacity
3006-8-MS	600 x 800 mm	\$364.00	\$274.00	\$46.00	1000kg
3009-8-MS	900 x 800 mm	\$412.00	\$322.00	\$58.00	815 kg
3012-8-MS	1200 x 800 mm	\$468.00	\$378.00	\$72.00	793 kg
3015-8-MS	1500 x 800 mm	\$532.00	\$442.00	\$88.00	635 kg
3018-8-MS	1800 x 800 mm	\$580.00	\$490.00	\$100.00	529 kg
3020-8-MS	2000 x 800 mm	\$644.00	\$554.00	\$116.00	471 kg
3024-8-MS	2400 x 800 mm	\$732.00	\$642.00	\$138.00	327 kg
3027-8-MS	2700 x 800 mm	\$788.00	\$698.00	\$152.00	258 kg
3030-8-MS	3000 x 800 mm	\$892.00	\$802.00	\$178.00	209 kg

4000mm HIGH

LONGSPAN SHELVING - METAL SHELVES

AVAILABLE COLOUR



Code	Description (W x D)	Complete Bay	Add-on Bay	Extra Shelf	Load Capacity
4006-4-MS	600 x 400 mm	\$350.00	\$245.00	\$35.00	1000kg
4009-4-MS	900 x 400 mm	\$394.00	\$289.00	\$46.00	815 kg
4012-4-MS	1200 x 400 mm	\$422.00	\$317.00	\$53.00	793 kg
4015-4-MS	1500 x 400 mm	\$470.00	\$365.00	\$65.00	635 kg
4018-4-MS	1800 x 400 mm	\$514.00	\$409.00	\$76.00	529 kg
4020-4-MS	2000 x 400 mm	\$546.00	\$441.00	\$84.00	471 kg
4024-4-MS	2400 x 400 mm	\$610.00	\$505.00	\$100.00	327 kg
4027-4-MS	2700 x 400 mm	\$674.00	\$569.00	\$116.00	258 kg
4030-4-MS	3000 x 400 mm	\$730.00	\$625.00	\$130.00	209 kg
4006-6-MS	600 x 600 mm	\$366.00	\$261.00	\$39.00	1000kg
4009-6-MS	900 x 600 mm	\$422.00	\$317.00	\$53.00	815 kg
4012-6-MS	1200 x 600 mm	\$458.00	\$353.00	\$62.00	793 kg
4015-6-MS	1500 x 600 mm	\$514.00	\$409.00	\$76.00	635 kg
4018-6-MS	1800 x 600 mm	\$570.00	\$465.00	\$90.00	529 kg
4020-6-MS	2000 x 600 mm	\$610.00	\$505.00	\$100.00	471 kg
4024-6-MS	2400 x 600 mm	\$682.00	\$577.00	\$118.00	327 kg
4027-6-MS	2700 x 600 mm	\$758.00	\$653.00	\$137.00	258 kg
4030-6-MS	3000 x 600 mm	\$826.00	\$721.00	\$154.00	209 kg
4006-8-MS	600 x 800 mm	\$408.00	\$296.00	\$46.00	1000kg
4009-8-MS	900 x 800 mm	\$456.00	\$344.00	\$58.00	815 kg
4012-8-MS	1200 x 800 mm	\$512.00	\$400.00	\$72.00	793 kg
4015-8-MS	1500 x 800 mm	\$576.00	\$464.00	\$88.00	635 kg
4018-8-MS	1800 x 800 mm	\$624.00	\$512.00	\$100.00	529 kg
4020-8-MS	2000 x 800 mm	\$688.00	\$576.00	\$116.00	471 kg
4024-8-MS	2400 x 800 mm	\$776.00	\$664.00	\$138.00	327 kg
4027-8-MS	2700 x 800 mm	\$832.00	\$720.00	\$152.00	258 kg
4030-8-MS	3000 x 800 mm	\$936.00	\$824.00	\$178.00	209 kg

NOTE: All prices are subject to change without prior notice

2000mm HIGH
LONGSPAN SHELVING - WIRE SHELVES
AVAILABLE COLOUR


Code	Description (W x D)	Complete Bay	Add-on Bay	Extra Shelf	Load Capacity
2012-4-WS	1200 x 400	\$408.00	\$352.00	\$74.00	793 kg
2015-4-WS	1500 x 400	\$492.00	\$436.00	\$95.00	635 kg
2018-4-WS	1800 x 400	\$540.00	\$484.00	\$107.00	529 kg
2020-4-WS	2000 x 400	\$608.00	\$552.00	\$124.00	471 kg
2024-4-WS	2400 x 400	\$680.00	\$624.00	\$142.00	327 kg
2030-4-WS	3000 x 400	\$836.00	\$780.00	\$181.00	209 kg
2009-6-WS	900 x 600	\$408.00	\$352.00	\$74.00	815 kg
2012-6-WS	1200 x 600	\$440.00	\$384.00	\$82.00	793 kg
2015-6-WS	1500 x 600	\$540.00	\$484.00	\$107.00	635 kg
2018-6-WS	1800 x 600	\$588.00	\$532.00	\$119.00	529 kg
2020-6-WS	2000 x 600	\$672.00	\$616.00	\$140.00	471 kg
2024-6-WS	2400 x 600	\$744.00	\$688.00	\$158.00	327 kg
2027-6-WS	2700 x 600	\$912.00	\$856.00	\$200.00	258 kg
2030-6-WS	3000 x 600	\$916.00	\$860.00	\$201.00	209 kg
2012-8-WS	1200 x 800	\$490.00	\$429.00	\$92.00	793 kg
2015-8-WS	1500 x 800	\$598.00	\$537.00	\$119.00	635 kg
2018-8-WS	1800 x 800	\$658.00	\$597.00	\$134.00	529 kg
2020-8-WS	2000 x 800	\$746.00	\$685.00	\$156.00	471 kg
2024-8-WS	2400 x 800	\$834.00	\$773.00	\$178.00	327 kg
2030-8-WS	3000 x 800	\$1026.00	\$965.00	\$226.00	209 kg

2500mm HIGH
LONGSPAN SHELVING - WIRE SHELVES

Code	Description (W x D)	Complete Bay	Add-on Bay	Extra Shelf	Load Capacity
2512-4-WS	1200 x 400	\$426.00	\$361.00	\$74.00	793 kg
2515-4-WS	1500 x 400	\$510.00	\$445.00	\$95.00	635 kg
2518-4-WS	1800 x 400	\$558.00	\$493.00	\$107.00	529 kg
2520-4-WS	2000 x 400	\$626.00	\$561.00	\$124.00	471 kg
2524-4-WS	2400 x 400	\$698.00	\$633.00	\$142.00	327 kg
2530-4-WS	3000 x 400	\$854.00	\$789.00	\$181.00	209 kg
2509-6-WS	900 x 600	\$426.00	\$361.00	\$74.00	815 kg
2512-6-WS	1200 x 600	\$458.00	\$393.00	\$82.00	793 kg
2515-6-WS	1500 x 600	\$558.00	\$493.00	\$107.00	635 kg
2518-6-WS	1800 x 600	\$606.00	\$541.00	\$119.00	529 kg
2520-6-WS	2000 x 600	\$690.00	\$625.00	\$140.00	471 kg
2524-6-WS	2400 x 600	\$762.00	\$697.00	\$158.00	327 kg
2527-6-WS	2700 x 600	\$930.00	\$865.00	\$200.00	258 kg
2530-6-WS	3000 x 600	\$934.00	\$869.00	\$201.00	209 kg

NOTE: All prices are subject to change without prior notice

Code	Description (W x D)	Complete Bay	Add-on Bay	Extra Shelf	Load Capacity
2512-8-WS	1200 x 800	\$508.00	\$438.00	\$92.00	793 kg
2515-8-WS	1500 x 800	\$616.00	\$546.00	\$119.00	635 kg
2518-8-WS	1800 x 800	\$676.00	\$606.00	\$134.00	529 kg
2520-8-WS	2000 x 800	\$764.00	\$694.00	\$156.00	471 kg
2524-8-WS	2400 x 800	\$852.00	\$782.00	\$178.00	327 kg
2530-8-WS	3000 x 800	\$1044.00	\$974.00	\$226.00	209 kg

3000mm HIGH LONGSPAN SHELVING - WIRE SHELVES

AVAILABLE COLOUR



Code	Description (W x D)	Complete Bay	Add-on Bay	Extra Shelf	Load Capacity
3012-4-WS	1200 x 400	\$464.00	\$380.00	\$74.00	793 kg
3015-4-WS	1500 x 400	\$548.00	\$464.00	\$95.00	635 kg
3018-4-WS	1800 x 400	\$596.00	\$512.00	\$107.00	529 kg
3020-4-WS	2000 x 400	\$664.00	\$580.00	\$124.00	471 kg
3024-4-WS	2400 x 400	\$736.00	\$652.00	\$142.00	327 kg
3030-4-WS	3000 x 400	\$892.00	\$808.00	\$181.00	209 kg
3009-6-WS	900 x 600	\$464.00	\$380.00	\$74.00	815 kg
3012-6-WS	1200 x 600	\$496.00	\$412.00	\$82.00	793 kg
3015-6-WS	1500 x 600	\$596.00	\$512.00	\$107.00	635 kg
3018-6-WS	1800 x 600	\$644.00	\$560.00	\$119.00	529 kg
3020-6-WS	2000 x 600	\$728.00	\$644.00	\$140.00	471 kg
3024-6-WS	2400 x 600	\$800.00	\$716.00	\$158.00	327 kg
3027-6-WS	2700 x 600	\$968.00	\$884.00	\$200.00	258 kg
3030-6-WS	3000 x 600	\$972.00	\$888.00	\$201.00	209 kg
3012-8-WS	1200 x 800	\$548.00	\$458.00	\$92.00	793 kg
3015-8-WS	1500 x 800	\$656.00	\$566.00	\$119.00	635 kg
3018-8-WS	1800 x 800	\$716.00	\$626.00	\$134.00	529 kg
3020-8-WS	2000 x 800	\$804.00	\$714.00	\$156.00	471 kg
3024-8-WS	2400 x 800	\$892.00	\$802.00	\$178.00	327 kg
3030-8-WS	3000 x 800	\$1084.00	\$994.00	\$226.00	209 kg

4000mm HIGH LONGSPAN SHELVING - WIRE SHELVES








Code	Description (W x D)	Complete Bay	Add-on Bay	Extra Shelf	Load Capacity
4012-4-WS	1200 x 400	\$506.00	\$401.00	\$74.00	793 kg
4015-4-WS	1500 x 400	\$590.00	\$485.00	\$95.00	635 kg
4018-4-WS	1800 x 400	\$638.00	\$533.00	\$107.00	529 kg
4020-4-WS	2000 x 400	\$706.00	\$601.00	\$124.00	471 kg
4024-4-WS	2400 x 400	\$778.00	\$673.00	\$142.00	327 kg
4030-4-WS	3000 x 400	\$934.00	\$829.00	\$181.00	209 kg

NOTE: All prices are subject to change without prior notice

Code	Description (W x D)	Complete Bay	Add-on Bay	Extra Shelf	Load Capacity
4009-6-WS	900 x 600	\$506.00	\$401.00	\$74.00	815 kg
4012-6-WS	1200 x 600	\$538.00	\$433.00	\$82.00	793 kg
4015-6-WS	1500 x 600	\$638.00	\$533.00	\$107.00	635 kg
4018-6-WS	1800 x 600	\$686.00	\$581.00	\$119.00	529 kg
4020-6-WS	2000 x 600	\$770.00	\$665.00	\$140.00	471 kg
4024-6-WS	2400 x 600	\$842.00	\$737.00	\$158.00	327 kg
4027-6-WS	2700 x 600	\$1010.00	\$905.00	\$200.00	258 kg
4030-6-WS	3000 x 600	\$1014.00	\$909.00	\$201.00	209 kg
4012-8-WS	1200 x 800	\$592.00	\$480.00	\$92.00	793 kg
4015-8-WS	1500 x 800	\$700.00	\$588.00	\$119.00	635 kg
4018-8-WS	1800 x 800	\$760.00	\$648.00	\$134.00	529 kg
4020-8-WS	2000 x 800	\$848.00	\$736.00	\$156.00	471 kg
4024-8-WS	2400 x 800	\$936.00	\$824.00	\$178.00	327 kg
4030-8-WS	3000 x 800	\$1128.00	\$1016.00	\$226.00	209 kg

2000 - 4000mm HIGH

LONGSPAN SHELVING - GALVANISED SHELVES

AVAILABLE COLOUR								
Code	Description (W x D)	Complete Bay	Add-on Bay	Extra Shelf	Load Capacity			
2012-6-GS	1200 x 600	\$368.00	\$312.00	\$64.00	793 kg			
2015-6-GS	1500 x 600	\$432.00	\$376.00	\$80.00	635 kg			
2018-6-GS	1800 x 600	\$480.00	\$424.00	\$92.00	529 kg			
2020-6-GS	2000 x 600	\$528.00	\$472.00	\$104.00	471 kg			
2024-6-GS	2400 x 600	\$600.00	\$544.00	\$122.00	327 kg			
2030-6-GS	3000 x 600	\$736.00	\$680.00	\$156.00	209 kg			
2512-6-GS	1200 x 600	\$386.00	\$321.00	\$64.00	793 kg			
2515-6-GS	1500 x 600	\$450.00	\$385.00	\$80.00	635 kg			
2518-6-GS	1800 x 600	\$498.00	\$433.00	\$92.00	529 kg			
2520-6-GS	2000 x 600	\$546.00	\$481.00	\$104.00	471 kg			
2524-6-GS	2400 x 600	\$618.00	\$553.00	\$122.00	327 kg			
2530-6-GS	3000 x 600	\$754.00	\$689.00	\$156.00	209 kg			
3012-6-GS	1200 x 600	\$424.00	\$340.00	\$64.00	793 kg			
3015-6-GS	1500 x 600	\$488.00	\$404.00	\$80.00	635 kg			
3018-6-GS	1800 x 600	\$536.00	\$452.00	\$92.00	529 kg			
3020-6-GS	2000 x 600	\$584.00	\$500.00	\$104.00	471 kg			
3024-6-GS	2400 x 600	\$656.00	\$572.00	\$122.00	327 kg			
3030-6-GS	3000 x 600	\$792.00	\$708.00	\$156.00	209 kg			
4012-6-GS	1200 x 600	\$466.00	\$361.00	\$64.00	793 kg			
4015-6-GS	1500 x 600	\$530.00	\$425.00	\$80.00	635 kg			
4018-6-GS	1800 x 600	\$578.00	\$473.00	\$92.00	529 kg			
4020-6-GS	2000 x 600	\$626.00	\$521.00	\$104.00	471 kg			
4024-6-GS	2400 x 600	\$698.00	\$593.00	\$122.00	327 kg			
4030-6-GS	3000 x 600	\$834.00	\$729.00	\$156.00	209 kg			